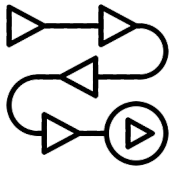


EasyMapper-LM

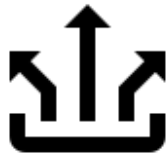
Efficiently integrated
LiDAR system

Key Features



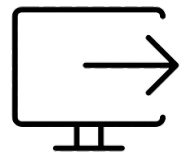
Easy to use and quick to process

It is easy to operate with an intuitive interface and processes data quickly and accurately.



High performance mapping system

It is a perfect integrated mapping tool with long-range functionality, high-density points, and advanced accuracy and precision



Safe operating range

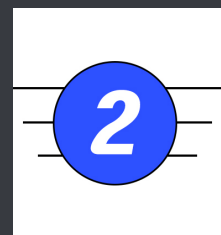
We maintain stable data transmission to ensure uninterrupted operation.



8MP RGB Camera

3.7kg

**Drone + LiDAR
total weight**



**Reliable drone with
C2 certification**

For precision terrain Mapping

EasyMapperr-LM is a lightweight, high-precision LiDAR solution that provides a long range of 230m and high point density for precise terrain mapping and data collection.

It also has a precision/accuracy of 4cm, providing consistent, high-quality data, and can operate reliably in a variety of environments.



EasyMapper-LM
Mapping LiDAR

Size 495 × 455 × 286 mm

Weight (incl.LiDAR) 3.7kg

Flight time (incl.LiDAR) 45 mins

Control distance Up to 230m

Battery capacity 12,000mAh

Laser canner

Livox AVIA

AGL altitude

70m

Precision

4cm

Accuracy

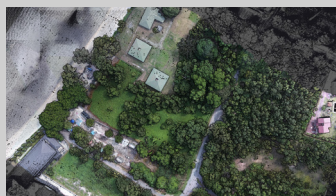
4cm

RGB camera

Built-in 8MP

Tools for Shaping the Future

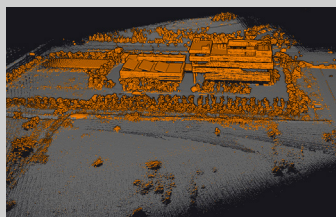
Various Applications



Point Cloud



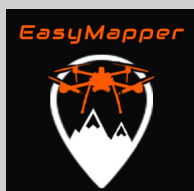
Object Dimension Analysis



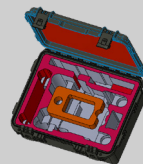
Ground Classification



Ground Object Removal



Package includes



Hard case

1EA



AQUILA 3F

1EA



GPS antenna

1EA



Mapper OEM
LiDAR

1EA



AVIATOR
Controller

1EA



Prop

4EA



Battery

2EA



Battery charger

1EA